

Inline Landroller

MANDAKO



INLINE LANDROLLER

What initially started as a rock roller has evolved into a multi-use tool that is now considered a valuable farm asset. Landrollers smooth the field surface by pushing down rocks and debris, allowing the cutter bar to operate effectively, reduce the risk of rock damage, and harvest a clean crop. Create better germination with optimal soil-to-seed contact. Increase yields on your farm with a Mandako Landroller!

MORE THAN JUST A ROCK ROLLER

Seeding - Rolling the field pre-plant creates an even seed bed for today's high-precision planters and air seeders. Consistent depth control is now a reality. Landrollers create better germination with optimal soil-to-seed contact for cereals and pulses. Pulse crop growers consistently find a 1-4 bushel per acre yield increase on rolled fields.

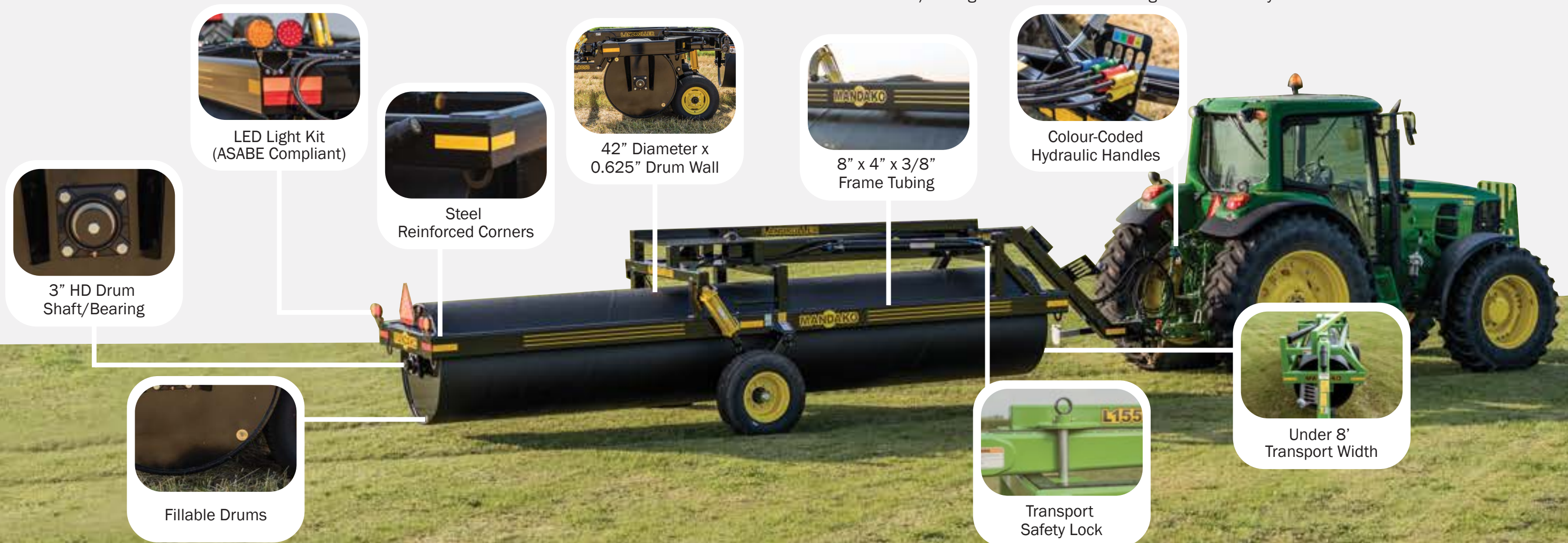
Spraying - Reduce the wear and tear on your sprayer and other equipment with smoother fields.

Harvesting - Keep sickle bar knives and guards from premature wear by keeping them out of the dirt. Avoid time-consuming and expensive repairs to your combine by keeping rocks out. Harvesting lodge crops becomes easier (and less stressful) knowing the field was rolled after planting.

Tillage - Using a Landroller on corn stalks after harvest crushes the stalks enabling them to decompose faster. Reduce the chance of causing damage to your tires or tracks by flattening the stalks.

Hay/Forage - Rolling in the spring can smooth out your field and help level rodent mounds.

Pasture Land/Acreages - Smooth out uneven ground caused by cattle or frost boils.



LED Light Kit (ASABE Compliant)



Steel Reinforced Corners



42" Diameter x 0.625" Drum Wall



8" x 4" x 3/8" Frame Tubing



Colour-Coded Hydraulic Handles



3" HD Drum Shaft/Bearing



Fillable Drums



Transport Safety Lock



Under 8' Transport Width

Unit Name	Inline Landroller			
Unit Size	10'	13'	15'	20'
Transport Length	15' 3"	18' 3"	22' 8"	26' 2"
Transport Width	7' 7"	7' 7"	7' 7"	7' 7"
Overall Width	11' 1"	14' 1"	16' 7"	21' 1"
Working Width	10' 1"	13' 1"	15' 7"	20' 1"
Overall Height	5' 1"	5' 1"	5' 1"	5' 1"
Hyd. Req. (@2800 PSI)	5 GPM (19 LPM)			
Hyd. Req. (Ports)	2	2	2	2
Horsepower Req.	60+	60+	70+	80+
Approx. Weight (lbs/ft)	675	650	600	525
Drum Size	36" x 1/2" W 42" x 5/8" W 42" x 3/4" W			
Tire Size	ST235/85R16E 14 Ply			
Optional Upgrades	Clevis Hitch Insert Mechanical Acre Counter Mud Scraper Kit			

Mandako Agri Marketing
(2010) Ltd.
12159B Hwy 306
Box 379
Plum Coulee, MB R0G 1R0

(888) 525-5892
www.mandako.com



Printed in Canada

